

## GREENJACKET ENERGIZED SITE ASSESSMENT

### ASSESSMENT PURPOSE

- identify each piece of equipment at risk, and determine the level of risk
- take photos of equipment and structures that will require Greenjacket covers to protect against wildlife contact

### BEFORE THE SITE VISIT

Before the site visit, you will be asked for any available information on:

- site access, safety, and procedure requirements
- historical station data (outage frequency, equipment affected, and known causes, including previous animal contacts and the species involved)
- substation layout (single line diagram or equivalent)



### ASSESSMENT PROCEDURE

Photos will be taken by our Assessors using a digital camera. **All data can be collected on energized equipment.**

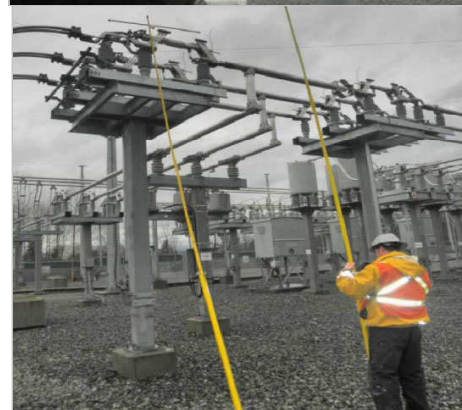
Cantega equipment includes:

- telescopic measuring stick
- telescopic universal stick
- 3-foot or 1-meter insulated measuring rule
- camera
- personal protection, including glasses, boots, gloves, hardhats, and FR clothing

All tools are tested and stamped with current test reports.

### PERSONNEL

Assessors will be provided. All Assessors are qualified utility workers trained in live line work.



**Call Salisbury by Honeywell for more information.**